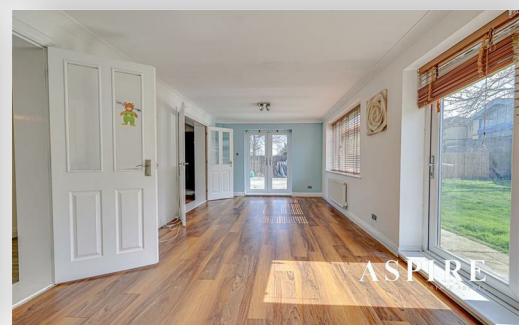


***To arrange a viewing contact us  
today on 01268 777400***



## **Chittock Mead, Basildon Guide price £425,000**

Aspire Estate Agents Basildon are delighted to present this generously proportioned five-bedroom terraced family home, ideally located on the sought-after Chittock Mead in Basildon. Offering an abundance of internal space and presented in excellent condition throughout, this property is perfectly suited to growing families looking for a spacious and well-connected home.

The ground floor features a welcoming entrance hall, a large reception room, and a bright and expansive lounge/dining area — ideal for family living and entertaining. The modern kitchen is well-appointed, offering plenty of storage and preparation space, complete with a central island and breakfast bar. A stylish ground floor W/C adds further convenience.

Upstairs, the home offers five well-sized bedrooms, providing flexible accommodation for larger families, guests, or even home office use. The contemporary four-piece family bathroom suite offers both a bath and separate shower, combining practicality and style.

Externally, the property benefits from a generous rear garden and includes a versatile outbuilding — perfect for use as a home office, gym, workshop or additional storage.

Additional features include double glazing throughout, gas central heating, and a spacious loft area, which offers further potential for conversion into additional living space (subject to the usual planning consents).

Situated within easy reach of local shops, amenities, reputable schools, and with excellent access to the A13 and A127, this property is ideally located for both daily convenience and commuter access.

Viewings are strongly advised to truly appreciate the scale, condition and potential of this fantastic family home.

## Generously Proportioned Five Bedroom Terrace House

Welcoming Entrance Hall 9'5 x 8'1

Spacious Kitchen 16 x 15'1

Bright And Airy Living Room 16'6 x 10'9

Huge Family Room 21'8 x 11'5

W/C 6'8 x 3

Main Bedroom 14 x 9'4

Bedroom Two 10'6 x 10'8

Bedroom Three 9'1 x 8'9

Bedroom Four 10'9 x 6'9

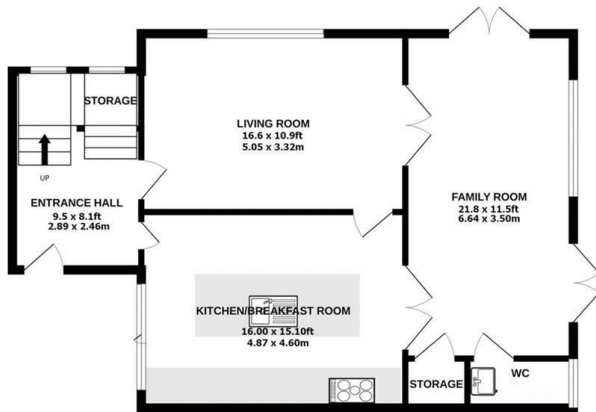
Bedroom Five 9'3 x 7'4

Four Piece Suite Bathroom 10'2 x 6'5 Max

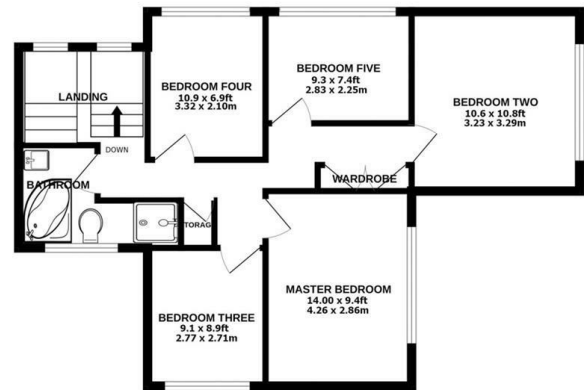
Remarkably Large Rear Garden

Combi Boiler System And Double Glazed Windows  
Throughout

GROUND FLOOR

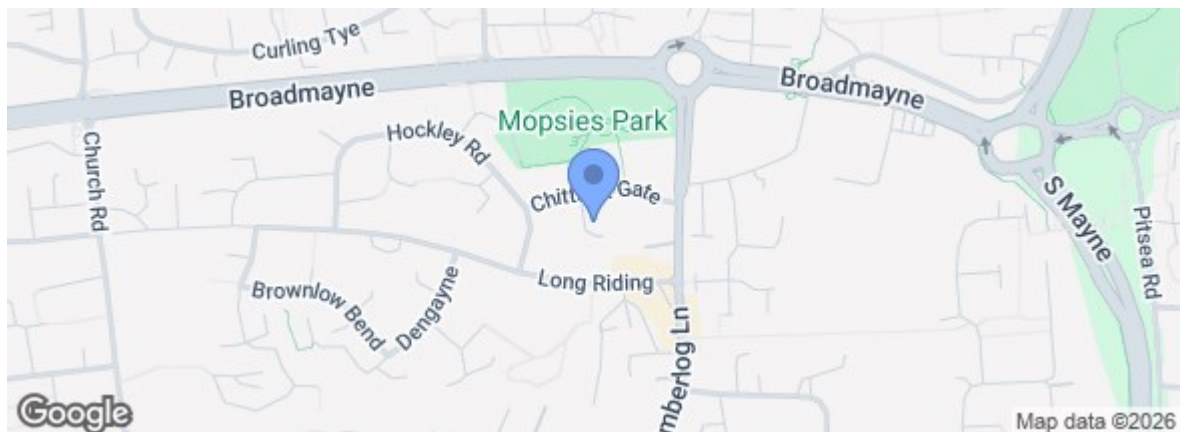
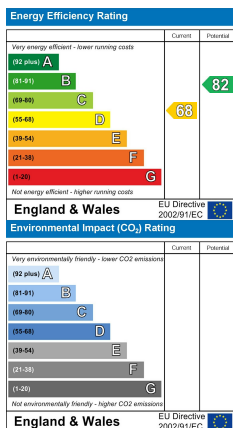


1ST FLOOR



**ASPIRE**  
ESTATE AGENTS  
CHITTOCK MEAD  
BASILDON

🚗 x5 🚲 x2



rightmove.co.uk  
The UK's number one property website

Zoopla.co.uk

Under the Property Misdescriptions Act 1991 we make every effort to ensure our sales details are accurate but they are a general outline and do not constitute any part of an offer or contract. Any services, equipment and fittings have not been tested and no warranty can be given as to their condition. We strongly recommend that all the information provided be verified by your advisors and in particular, measurements required for a specific purpose such as fitted furniture or carpets. Please tell us if you have any problems and members of our branches will help either over the phone or in person. A copy of our complaints procedure is available on request. The details are issued on the strict understanding that any negotiations in respect of the property named herein are conducted through Aspire Estate Agents.